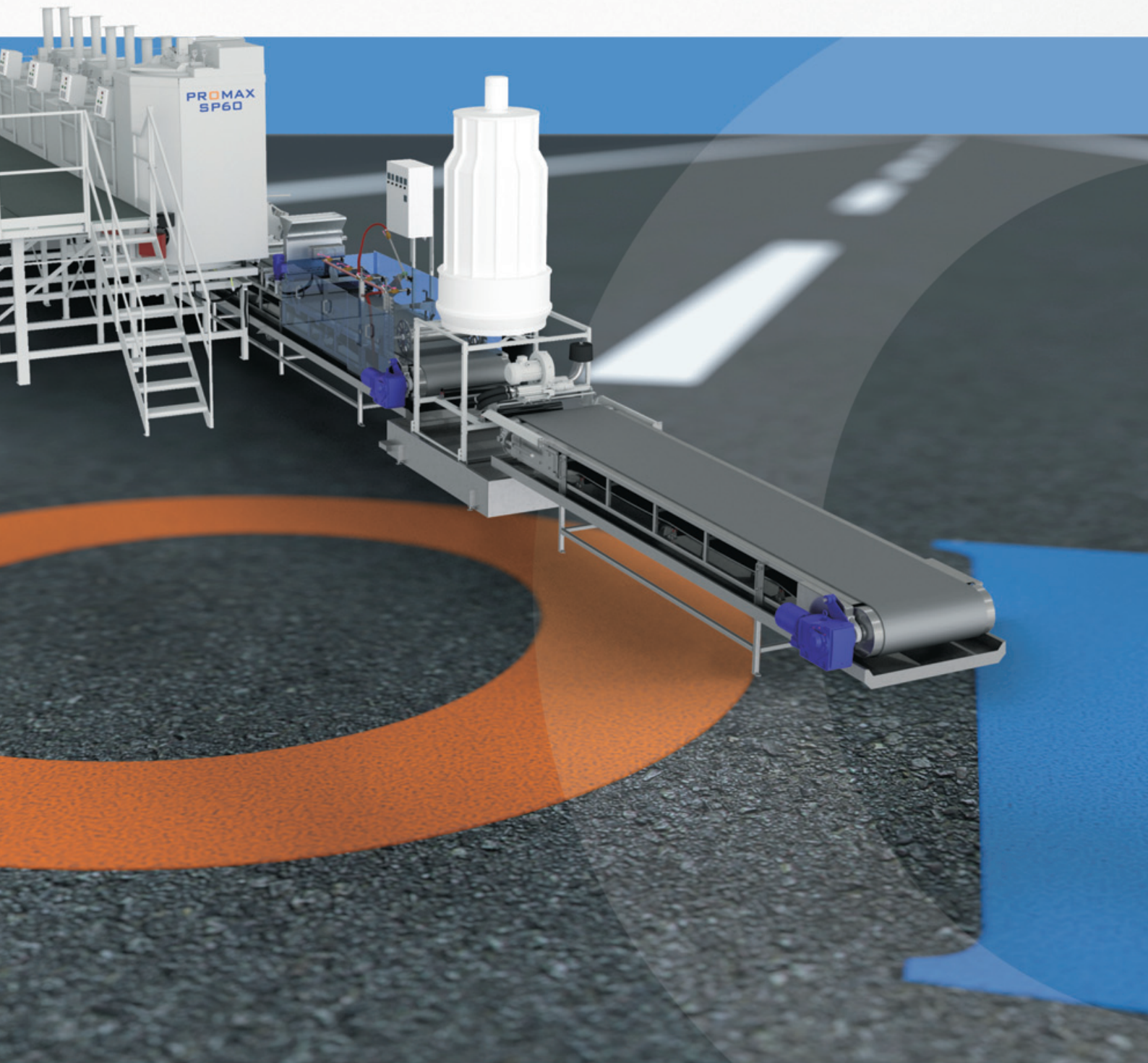


PROMAX

ROAD MARKING
THERMOPLASTIC
PRODUCTION PLANTS



PROMAX is a world-class provider of services from specifications to installation and operation.



PROMAX CF03

Thermoplastic production plant

PROMAX CF03 is a new generation of thermoplastic manufacturing plants for road marking material. The plants are built in a module system which gives us the possibility to construct the plant and put it into operation in as little as 10-15 working days.

The plants can be installed even in the smallest manufacturing facilities thanks to their compact and efficient module design. Electric power is the only external facility which is required to put the plant into function with full production capacity.

In order to ensure a stable production of more than 500 various thermoplastic compounds, the plant can be supplied with the most modern batch production control and registration system.

Production capacity	6 ton/hour
Raw material tanks	32 m ³
Mixer	1 ton/batch
Oil injection	30 liters/min by 4 injectors
Production cycle	10 min
Pneumatic system	1,5 m ³ /min
Ready mix tank	1,5 ton
Bagging hopper	2 units
Bagging cycle	4x25 kg/min
Oil and additive tank	1500 liters
Oil mixer	integrated
Batching system	PLC/computer control
Dimensions	L. 18,6 m; W. 3,1 m; H. 6,2 m
Weight	21 tons



OIL MIX



6 t/h



10 min.



1500 L



PLC



21 t

PROMAX CF03 TWIN MIX

Thermoplastic production plant

The thermoplastic production plant PROMAX CF03 TWIN MIX is targeted towards dual colour production with a requirement of 12 tons per hour.

PROMAX installs the plant, excluding electrical installation and lifting equipment, and it is up and running within 15-20 working days.

We train staff on site in using the plant and provide the technology as well as the necessary thermoplastic formulations (max. 10 formulations).

PROMAX provides full production support for the first year.



OIL MIX



12 t/h



5 min.



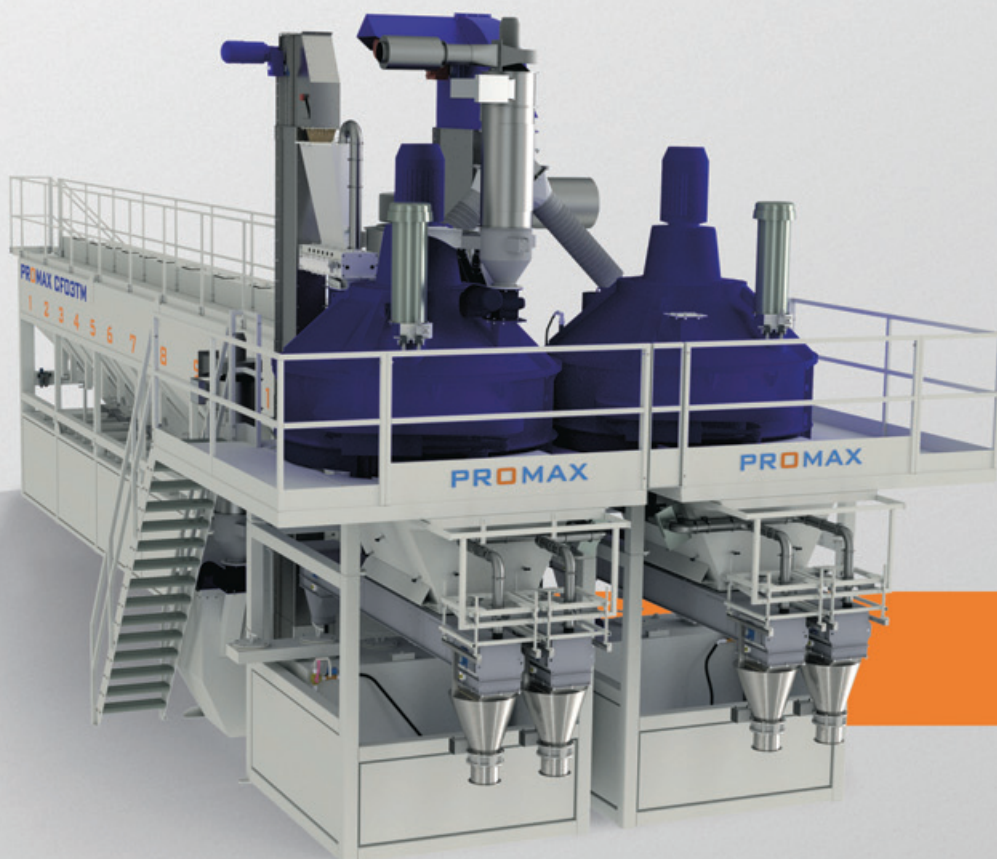
2x1500 L



PLC



28 t



Production capacity	12 ton/hour
Raw material tanks	32 m ³
Mixer	2x1 ton/batch
Oil injection	2x30 liters/min by 4 injectors
Production cycle	5 min
Pneumatic system	1,5 m ³ /min
Ready mix tank	2x1,8 ton
Bagging hopper	4 units
Bagging cycle	8x25 kg/min
Oil and additive tank	2x1500 liters
Oil mixer	integrated
Batching system	PLC/computer control
Dimensions	L. 18,6 m; W. 6,1 m; H. 6,6 m
Weight	28 tons

PROMAX CF02

Thermoplastic production plant

The new PROMAX CF02 production plant is targeted towards clients with a production requirement of 1,5 tons per hour.

PROMAX CF02 is designed as a module system which allows us to erect and put this plant into operation in just 3-5 working days. The plant can be installed in even the smallest manufacturing facility, thanks to its unique compact design. Electric power is the only external facility required to put the plant into full production mode. The computer controlled batching system with upto 100 recipe options is securing the quality of each manufactured batch.

Production capacity	2 ton/hour
Raw material tanks	32 m ³
Mixer	750 kg/batch
Oil injection	28 liters/min by 2 injectors
Production cycle	20 min.
Pneumatic system	compressor integrated
Ready mix tank	1,8 ton
Bagging hopper	1 units
Bagging cycle	25 kg/min
Oil and additive tank	1000 liters
Oil mixer	integrated
Batching system	electric control
Dimensions	L. 7,0 m, B. 5,9 m, H. 4,8 m
Weight	6,5 tons



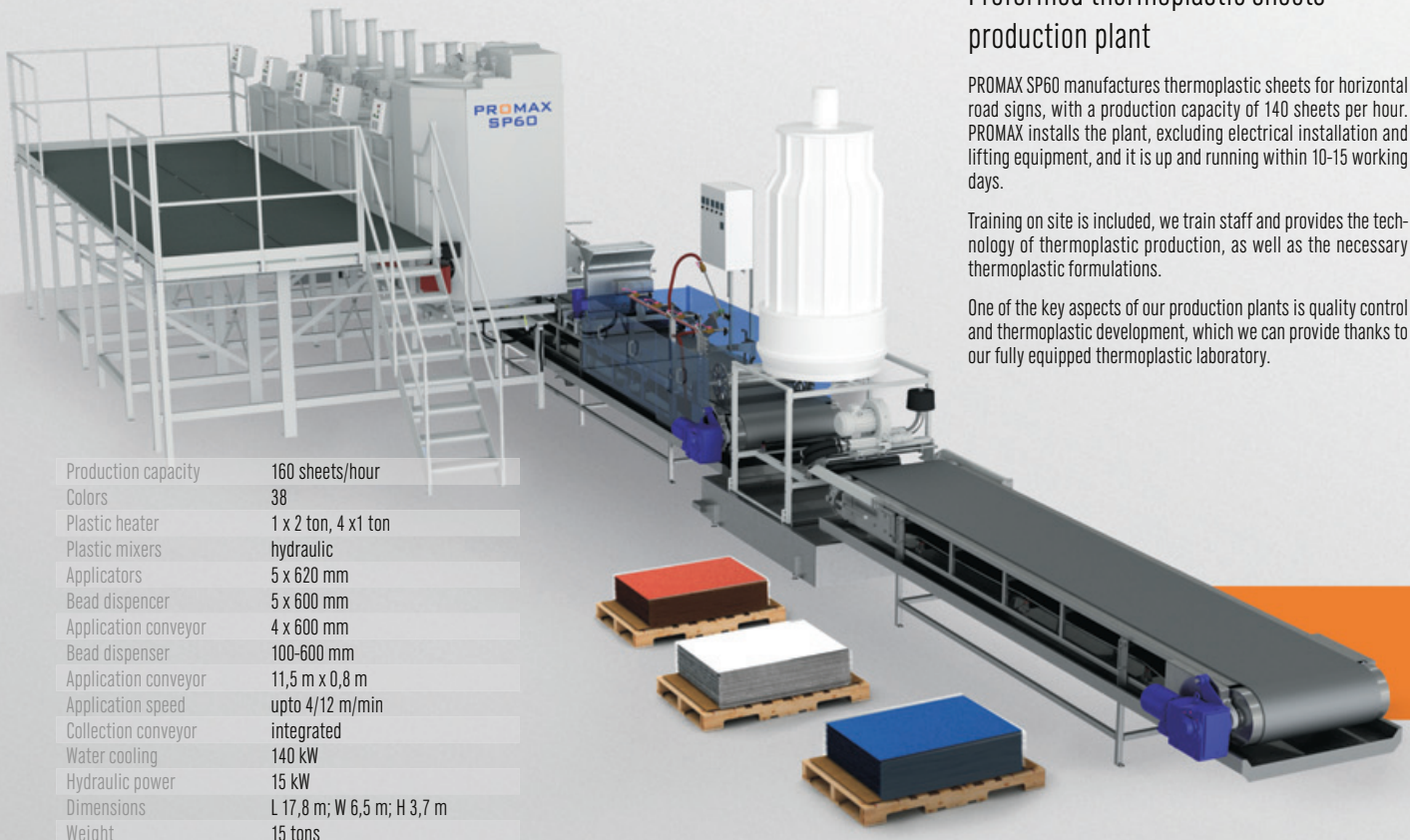
PROMAX SP60

Preformed thermoplastic sheets production plant

PROMAX SP60 manufactures thermoplastic sheets for horizontal road signs, with a production capacity of 140 sheets per hour. PROMAX installs the plant, excluding electrical installation and lifting equipment, and it is up and running within 10-15 working days.

Training on site is included, we train staff and provides the technology of thermoplastic production, as well as the necessary thermoplastic formulations.

One of the key aspects of our production plants is quality control and thermoplastic development, which we can provide thanks to our fully equipped thermoplastic laboratory.

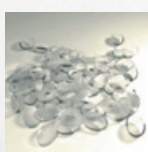


Production capacity	160 sheets/hour
Colors	38
Plastic heater	1 x 2 ton, 4 x 1 ton
Plastic mixers	hydraulic
Applicators	5 x 620 mm
Bead dispenser	5 x 600 mm
Application conveyor	4 x 600 mm
Bead dispenser	100-600 mm
Application conveyor	11,5 m x 0,8 m
Application speed	upto 4/12 m/min
Collection conveyor	integrated
Water cooling	140 kW
Hydraulic power	15 kW
Dimensions	L 17,8 m; W 6,5 m; H 3,7 m
Weight	15 tons

RAW MATERIALS



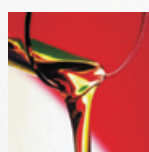
Rosin resin



EVA copolymers



Rubber



Polybut



Titanium dioxide



Wax and Amides



Petroleum resins

KEY BENEFITS

One of the key aspects of our production plants is quality control and thermoplastic development, which we can provide thanks to our fully equipped thermoplastic laboratory. We train our customers' staff on site in operating their respective plant, we provide recipe services for product formulation and offer full production support for the first year after installation.

PROMAX cooperates with a long line of professional customers across the globe, and to date we have supplied thermoplastic plants to Russia, Belarus, Sweden, Portugal, Spain, Italy, Great Britain, Ireland, Germany, Lithuania, Latvia, Romania, Bulgaria, Hungary, Sri Lanka, Syria, Ghana, Kenya, Qatar, Iran, Turkey, Saudi Arabia, United Arab Emirates, Morocco, India, Philippines, South Korea, Thailand, Brazil, Uruguay, Ecuador, Argentina, Australia, USA, Canada, Mauritius amongst others.

Along with the production plants, PROMAX supplies customers with a wide range of chemicals and raw materials such as hydrocarbon and petroleum resin, rosin resin, glass beads, EVA, rubber, titanium etc.

Gaining a strong and competitive edge on raw material prices is essential in the current business environment, where pricing has become a paramount factor in competing with overseas manufacturers who have lower production and labour costs. Importing raw materials from leading manufacturing countries carries numerous risks and hidden costs, and we are here to control your costs and reduce your risks.

WHAT WE DO

Production and supply of turn-key factories for manufacturing of road marking products.

After sale service and development of new road marking methods together with a client.

Supply of raw materials for manufacturing of road marking thermoplastic, paint and pre-formed thermoplastic signs.

Supply of machinery and service for road safety solutions.

CO-OPERATION

Co-operation with contractors in 42 countries from all continents.

